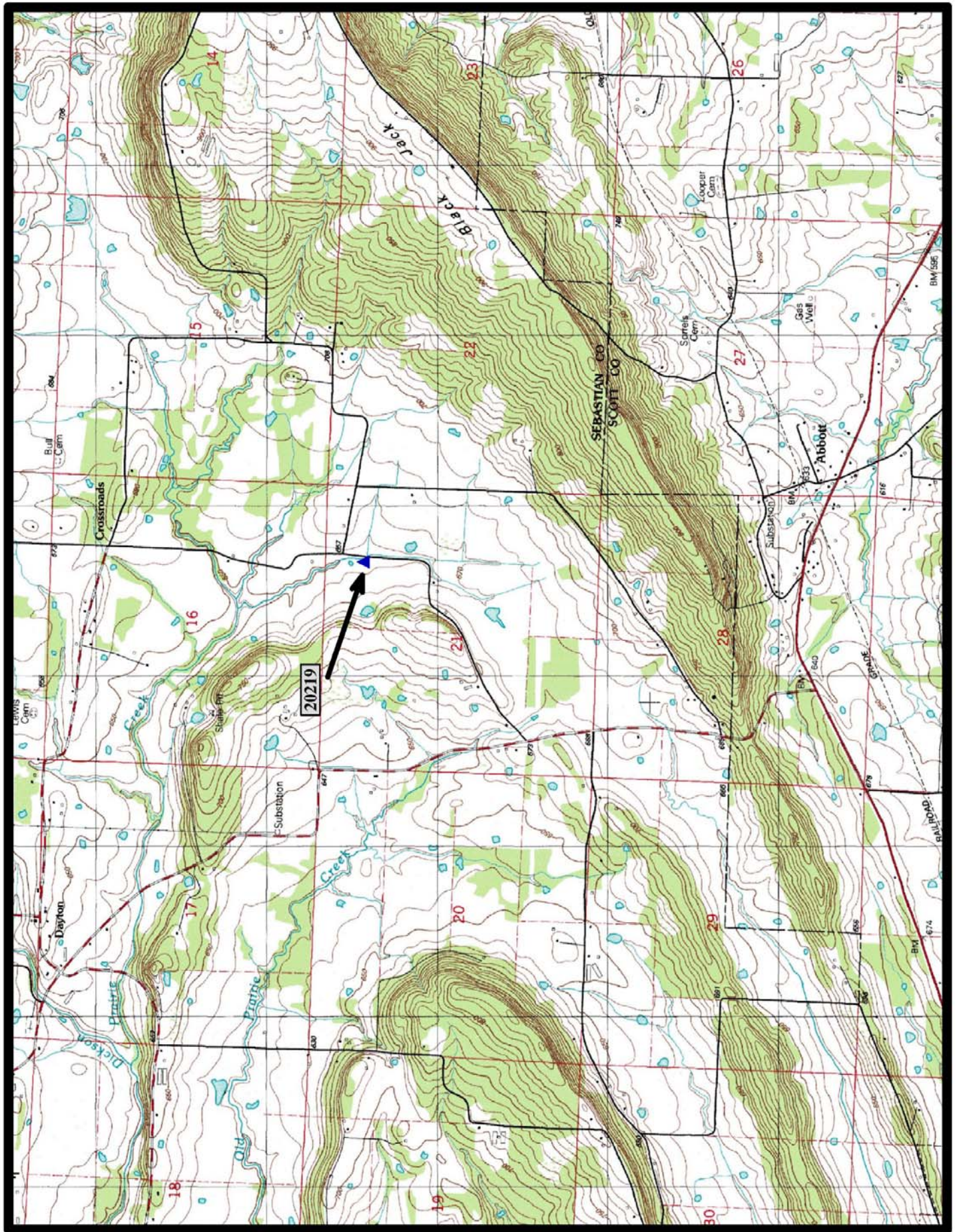




HISTORIC BRIDGE #20219
ABBOTT CROSS ROAD (Co. Rd. 80)
SEBASTIAN COUNTY
CONCRETE CONTINUOUS SLAB
CROSSES - TRIBUTARY PRAIRIE CREEK
DATE OF CONSTRUCTION – 1943
BUILDER - WORK PROGRESS ADMINISTRATION (WPA)
HISTORIC BRIDGE INVENTORY DATE - 2010
SHPO NUMBER –
HAER NUMBER -
DATE LISTED ON NATIONAL REGISTER -
LAT./LONG. 35:05:54.63, -94:11:58.03

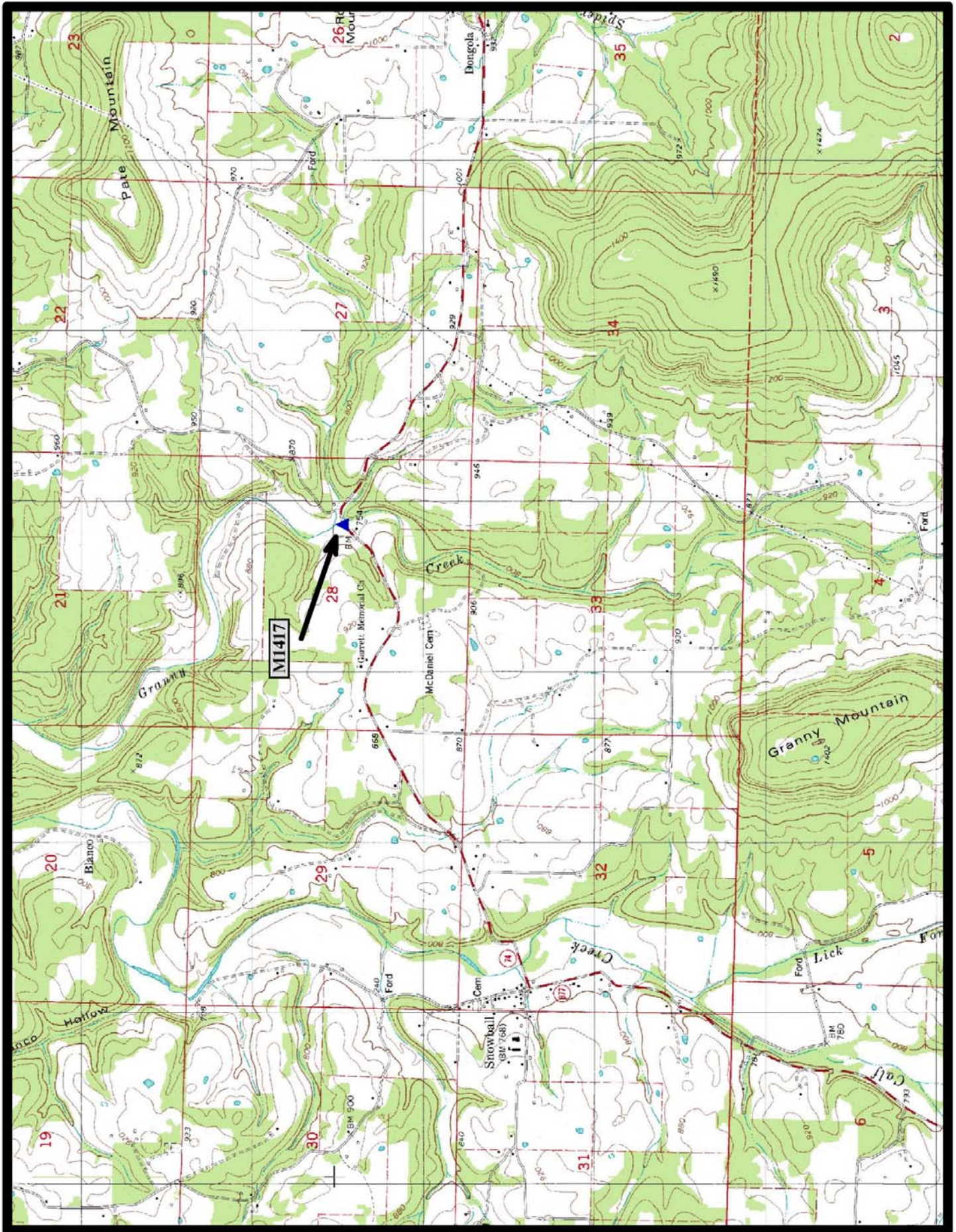


North

Abbott 7.5 min. Quad



HISTORIC BRIDGE #M1417
STATE HIGHWAY 74
SEARCY COUNTY
CONCRETE CONTINUOUS SLAB
CROSSES - GRANNY CREEK
DATE OF CONSTRUCTION - 1940
BUILDER - WORK PROGRESS ADMINISTRATION (WPA)
HISTORIC BRIDGE INVENTORY DATE - 2010
SHPO NUMBER -
HAER NUMBER -
DATE LISTED ON NATIONAL REGISTER -
LAT./LONG. 35:54:54.66, -92:47:26.86

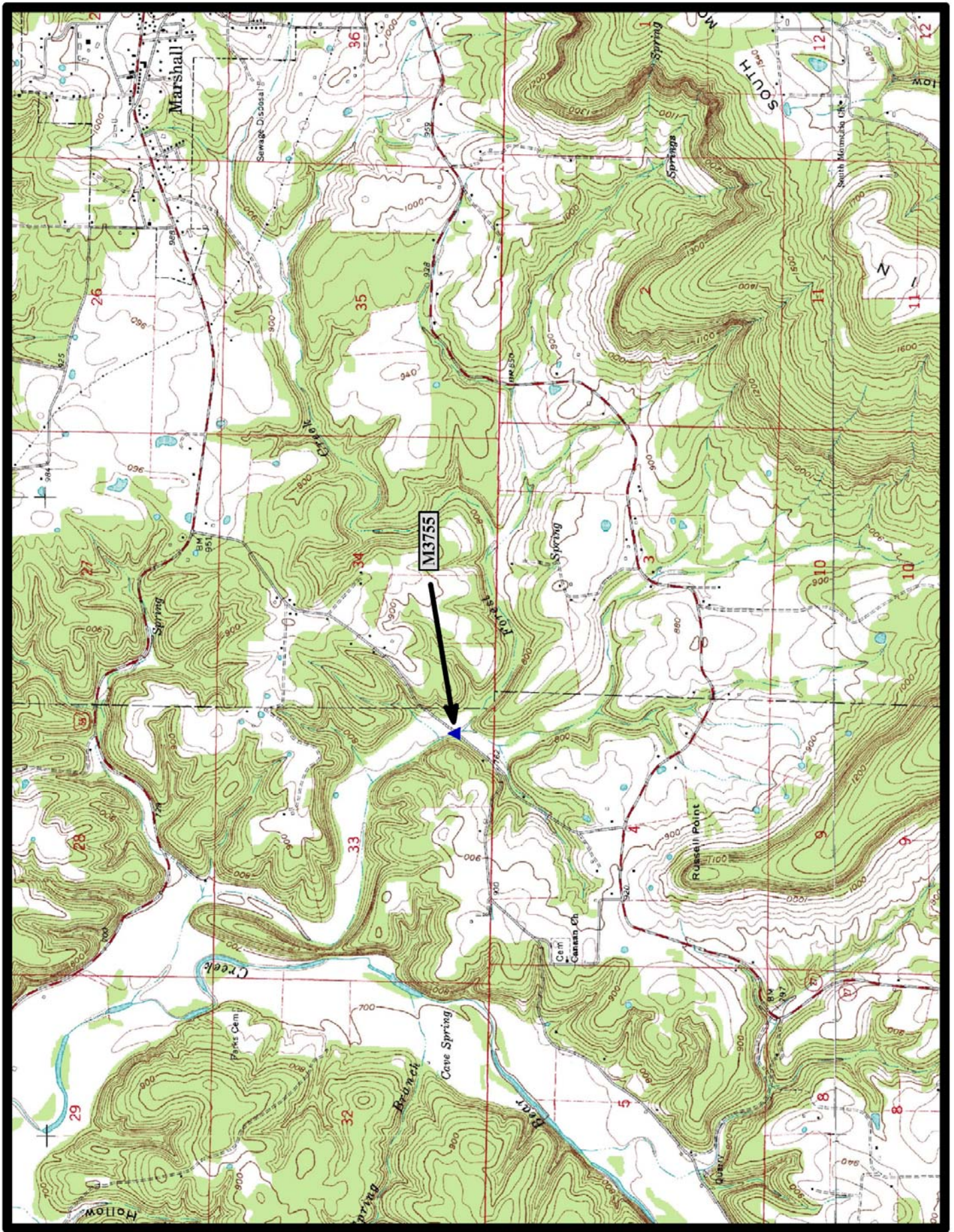


↑
North

Snowball 7.5 min. Quad



HISTORIC BRIDGE #M3755
STATE HIGHWAY 333
SEARCY COUNTY
CONCRETE CONTINUOUS SLAB
CROSSES - FOREST CREEK
DATE OF CONSTRUCTION - 1942
BUILDER - WORK PROGRESS ADMINISTRATION (WPA)
HISTORIC BRIDGE INVENTORY DATE - 2010
SHPO NUMBER -
HAER NUMBER -
DATE LISTED ON NATIONAL REGISTER -
LAT./LONG. 35:53:42.44, -92:40:56.32



North

Marshall 7.5 min. Quad